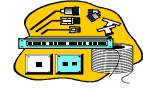


Ultra DMA/133 IDE <u>round</u> cable 80-wire, double	*	\$9.16	19.3 ლარი.
Audio cable	*	\$0.46	0.97 ლარი.
FDD Cable	*	\$0.60	1.27 ლარი.
<b>GAME PORT CABLES AND ADAPTERS</b>			
Joystick Y-cable	*	\$5.52	11.6 ლარი.
Midi Cable	*	\$19.2	40.4 ლარი.
<b>TELEPHONE CORDS</b>			
Telephone Cord 1.5 m	*	\$0.55	1.16 ლარი.
Telephone Cord 3.0 m	*	\$0.76	1.60 ლარი.
Telephone Cord 4.5 m	*	\$0.95	2.00 ლარი.
Telephone Cord 6.0 m	*	\$1.10	2.32 ლარი.
Telephone Cord 9.0 m	*	\$1.41	2.98 ლარი.
Auto Reel Telephone Cord RJ-11, compact	*	\$7.76	16.4 ლარი.
Telephone Extension Reel 10 meters, RJ-11 to 2*RJ-11	USREEL-10M / WH4C	\$7.25	15.3 ლარი.
Telephone Extension Reel 15 meters, RJ-11 to 2*RJ-11	USREEL-15M / WH4C	\$8.25	17.4 ლარი.
Telephone Handset Cord 4P4C - 4P4C, range of colors	*	\$0.52	1.10 ლარი.
Cable-Adapter for PCMCIA Modem with RJ-11 jack	*	\$14.5	30.7 ლარი.

<b>FIREWIRE (IEEE 1394) CABLES AND ADAPTERS</b>			
FireWire (IEEE 1394) Controller TI-chipset TSB12LV26, 3-port (ext), I		\$21.8	46.0 ლარი.
FireWire (IEEE 1394) Controller NEC-cdchipset, 2-port (ext) + cable, PCI, Retail	PTI-213	\$24.8	52.4 ლარი.
3 Port PCI to IEEE 1394 Host Adapter AdvanSys-chipset, 2-port (ext) + 1 port (int), PCI, Retail		\$27.5	58.1 ლარი.
Tekram FireWire (IEEE 1394) Adapter DC-1394W, 3-port (ext) + cable, PCI, Retail		\$40.5	85.4 ლარი.
FireWire (IEEE 1394) Cable, 6-pin(M) to 6-pin(M)		\$5.44	11.5 ლარი.
FireWire (IEEE 1394) Cable, 6-pin(M) to 4-pin(M)		\$5.44	11.5 ლარი.
FireWire (IEEE 1394) Cable, 4-pin(M) to 4-pin(M)		\$5.44	11.5 ლარი.

## Network and Telephony Mounting Equipment



Category 5 UTP Ethernet Cable 30 m. roll	\$0.22 / metre	UTD30	*	\$6.60	13.9 ლარი.
Omega/Elite/Astrx/... Category 5 UTP Ethernet Cable 100 m.	\$0.195 / metre	UT100	*	\$19.5	41.1 ლარი.
Omega/Elite/Astrx/... Category 5 UTP Ethernet Cable 305 m.	\$0.177 / metre	UT305	*	\$54.0	114.0 ლარი.
Omega/Elite/BonEagle/... Category 5e UTP Ethernet Cable 100 m.	\$0.205 / metre	UTE100	*	\$20.5	43.3 ლარი.
Omega/Elite/BonEagle/... Category 5e UTP Ethernet Cable 305 m.	\$0.187 / metre	UTE305	*	\$57.0	120.2 ლარი.
Omega Category 5 STP (Shielded) Solid Ethernet Cable 100 m.	\$0.465 / metre	ST100	*	\$46.5	98.1 ლარი.
Omega Category 5 STP (Shielded) Solid Ethernet Cable 305 m.	\$0.45 / metre	ST305	*	\$137.-	290 ლარი.
UTP Category 6 Gigabit Systems Ethernet Cable 100 m.	\$0.48 / metre	U6100	*	\$48.0	101.3 ლარი.
UTP Category 6 Gigabit Systems Ethernet Cable 305 m.	\$0.475 / metre	U6305	*	\$145.-	306 ლარი.
Fuling SmallPack (50m.) Category 5 UTP Cable - retail packing with handle			*	\$11.4	24.1 ლარი.
LG Category 5 UTP Ethernet Cable 305 m.	\$0.185 / metre	LG_5_UT305	*	\$56.5	119.2 ლარი.
LG Category 5e UTP Ethernet Cable 305 m.	\$0.2 / metre	LG_5e_UT305	*	\$61.0	128.7 ლარი.
LG Category 5e FTP Ethernet Cable 305 m.	\$0.373 / metre	LG_5e_FT305	*	\$114.-	240 ლარი.
LG Category 6 UTP Ethernet Cable 305 m.	\$0.489 / metre	LG_6_UT305	*	\$149.-	315 ლარი.
LG Category 6 FTP Ethernet Cable 305 m.	\$0.545 / metre	LG_6_FT305	*	\$166.-	351 ლარი.
LG Category 5e S-FTP Ethernet Cable 305 m.	\$0.576 / metre	LG_5e_SFT305	*	\$176.-	371 ლარი.
LG Category 6 S-FTP Ethernet Cable 305 m.	\$0.695 / metre	LG_6_SFT305	*	\$212.-	447 ლარი.
UTP Category 5 Patch Cord 1 m., grey			*	\$0.85	1.79 ლარი.
UTP Category 5 Patch Cord 2 m., grey / red			*	\$1.25	2.64 ლარი.
UTP Category 5 Patch Cord 3 m., grey / red / black			*	\$1.75	3.7 ლარი.
UTP Category 5 Patch Cord 5 m., grey			*	\$2.25	4.7 ლარი.
RJ-45 Cable Connector 8P8C, Cat.5			*	\$0.09	0.19 ლარი.
RJ-45 Cable Connector 8P8C, Cat.5 (pack of 200)			*	\$15.8	33.4 ლარი.
RJ-45 Cable Connector 8P8C, Enh.Cat.5/Cat.6			*	\$0.19	0.40 ლარი.
RJ-45 Cable Connector 8P8C, Enh.Cat.5/Cat.6 (pack of 100)			*	\$17.8	37.6 ლარი.
RJ-45 Cable Connector 8P8C, for STP (shielded)			*	\$0.75	1.58 ლარი.
RJ-45 Connector Cap			*	\$0.09	0.19 ლარი.
RJ-45 Connector Coupler (single or double)			*	\$0.85	1.79 ლარი.
RJ-45 Category 5 Socket single (surface mounting) - screws	TA 468 8C		*	\$1.03	2.17 ლარი.
RJ-45 Category 5 Socket single (surface mounting) - Krone / Vcom / Keystone Jack Bc			*	\$3.41	7.2 ლარი.
RJ-45 Category 5 Socket double (surface mounting) - Krone			*	\$5.88	12.4 ლარი.
RJ-45 Category 5 Wall Socket single (wall mounting), without box			*	\$2.25	4.7 ლარი.
Box for RJ-45 Category 5 Wall Socket single (wall mounting)			*	\$0.42	0.89 ლარი.
RJ-45 Category 5 Wall Socket double (wall mounting), without box			*	\$2.90	6.1 ლარი.
Alcatel/Nexans RJ-45 Category 5 Outlet (external)			*	\$9.40	19.8 ლარი.
UTP Category 5 Patch Panel 16-port, 19"			*	\$38.0	80.2 ლარი.
UTP Category 5 Patch Panel 24-port, 19"			*	\$46.0	97.0 ლარი.
UTP Category 5 Patch Panel 32-port, 19"			*	\$73.0	154.0 ლარი.
UTP Category 5 Patch Panel 48-port, 19"			*	\$102.-	214 ლარი.
UTP Category 5 Patch Panel 12-port, External, Wall-mounting			*	\$34.5	72.8 ლარი.
D-Link Rack Mount Modular Patch Panel 12-port, Enh.Cat.5 UTP/Krone	DCEPP12KRO1URU		*	\$44.0	92.8 ლარი.
D-Link Rack Mount Modular Patch Panel 24-port, Enh.Cat.5 UTP/Krone	DCEPP24KRO1URU		*	\$71.0	149.7 ლარი.
Ethernet RG-58 Coaxial Cable 100 m.			*	\$26.8	56.6 ლარი.
Ethernet BNC-connector			*	\$0.32	0.68 ლარი.
Ethernet Terminator			*	\$0.63	1.33 ლარი.
Ethernet Terminator with chain			*	\$0.76	1.60 ლარი.
Ethernet T-connector			*	\$0.59	1.24 ლარი.
Ethernet I-connector			*	\$0.58	1.22 ლარი.
Telephone Cable 4-wire, 100 m (white, black, gray, silver, ivory)			*	\$8.90	18.8 ლარი.
RJ-11 Connector 6P4C			*	\$0.05	0.11 ლარი.
RJ-11 Connector 6P4C (pack of 100)			*	\$3.80	8.0 ლარი.